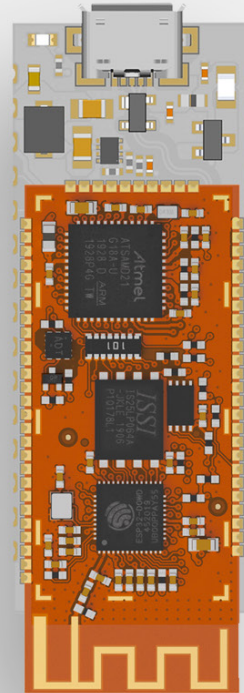


Briki Nano Adapter

MBC Nano Adapter Device



OVERVIEW

The Briki® MBC Nano Adapter is designed to speed up firmware development with the Briki MBC™.

USB 2.0 device interface

Arduino Nano Pinout compatible

Easily solderable as a module in third-party PCBs

Exposed debug interfaces for the MBC's chips (bottom side)

FEAUTES

Technical information

USB interface for both communication/programming and power supply

Embedded 3.3V voltage regulator, output current up to 2A

Integrated user controllable LED

All the MBC's pin that are not part of the Arduino Nano pinout, are exposed on the bottom layer of the board

Product size: 52 x 18.5 mm

Compatible with all the "1-brick" MBC modules

This product is sold by request as products for industrial use. The MBC Nano Adapter is available for the MBC WB o LR (all the 1-brick format product) in different versions by hardware configuration and functionalities. Depending on your design, you may prefer one version over the other. Contact us to find the best suited for you!

DEVELOPMENT TOOLS

Firmware and software tools

Meteca offers a customised software platform for this board.